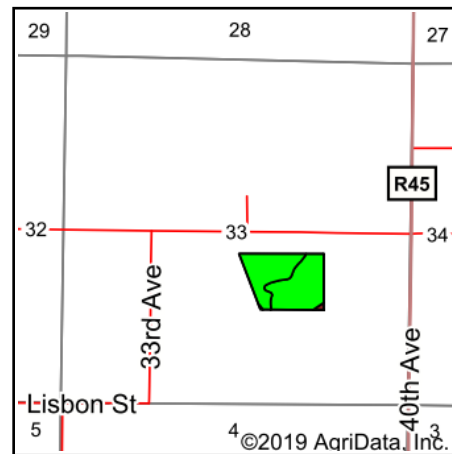
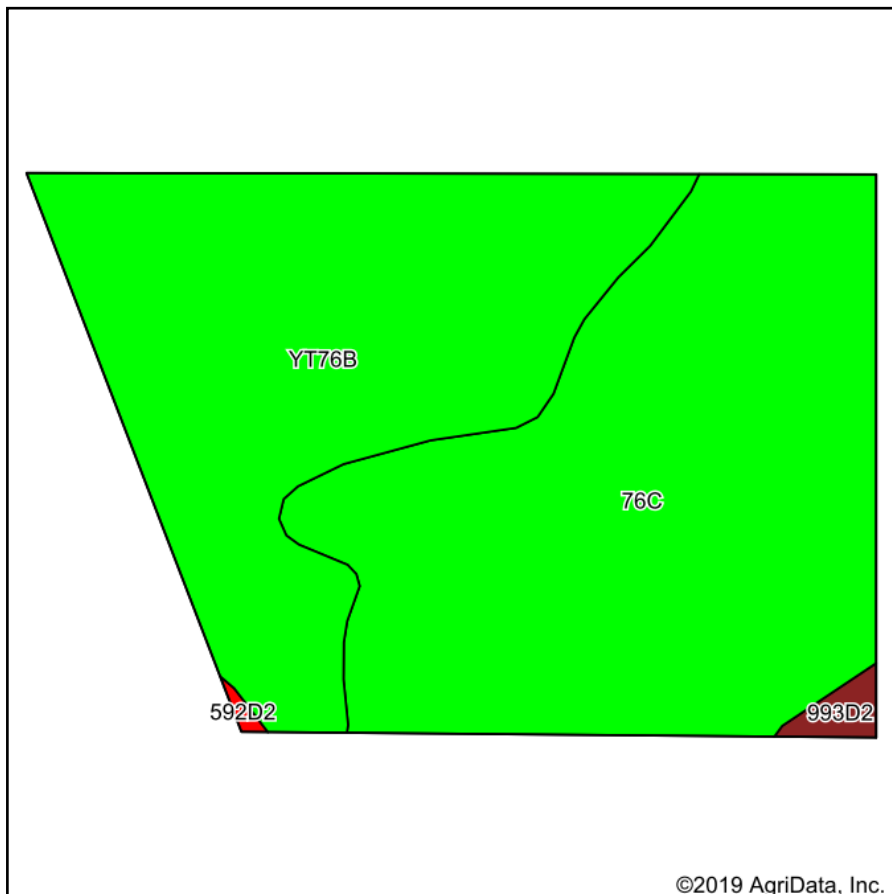


Soils Map



State: **Iowa**
 County: **Warren**
 Location: **33-76N-25W**
 Township: **Jefferson**
 Acres: **22.44**
 Date: **4/11/2019**



Maps Provided By:

 CUSTOMIZED ONLINE MAPPING
 © AgriData, Inc. 2019 www.AgriDataInc.com



Area Symbol: IA181, Soil Area Version: 23

Code	Soil Description	Acres	Percent of field	CSR2 Legend	Non-Irr Class *c	CSR2**	CSR	*n NCCPI Soybeans
76C	Ladoga silt loam, dissected till plain, 5 to 9 percent slopes	12.36	55.1%		IIIe	80	70	76
YT76B	Ladoga silt loam, terrace on dissected till plain, 2 to 5 percent slopes	9.86	43.9%		Ile	86		78
993D2	Armstrong-Gara loams, 9 to 14 percent slopes, moderately eroded	0.22	1.0%		IVe	23	20	46
Weighted Average						82.1	*-	*n 76.6

**IA has updated the CSR values for each county to CSR2.

*- CSR weighted average cannot be calculated on the current soils data, use prior data version for csr values.

*n: The aggregation method is "Weighted Average using major components"

*c: Using Capabilities Class Dominant Condition Aggregation Method

Soils data provided by USDA and NRCS.